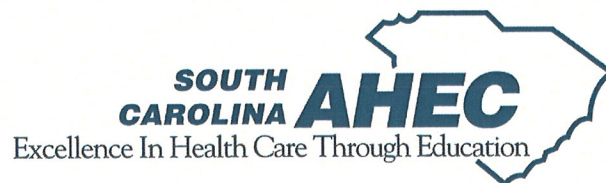
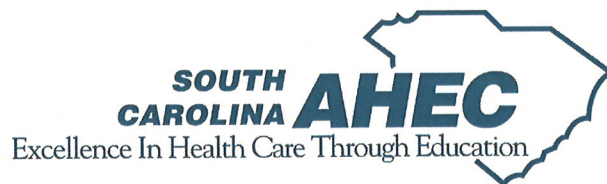


South Carolina Area Health Education Consortium

Building and Supporting the Healthcare Workforce South Carolina Needs

**Presentation to the House Ways & Means Committee
Healthcare Subcommittee
February 3, 2016**





List of Key Officials

David R. Garr, MD

Executive Director
843-792-4429
garrdr@musc.edu

Donald N. Tyner

*Associate Director for Administration
& Finance*
843-792-4427
tynerd@musc.edu

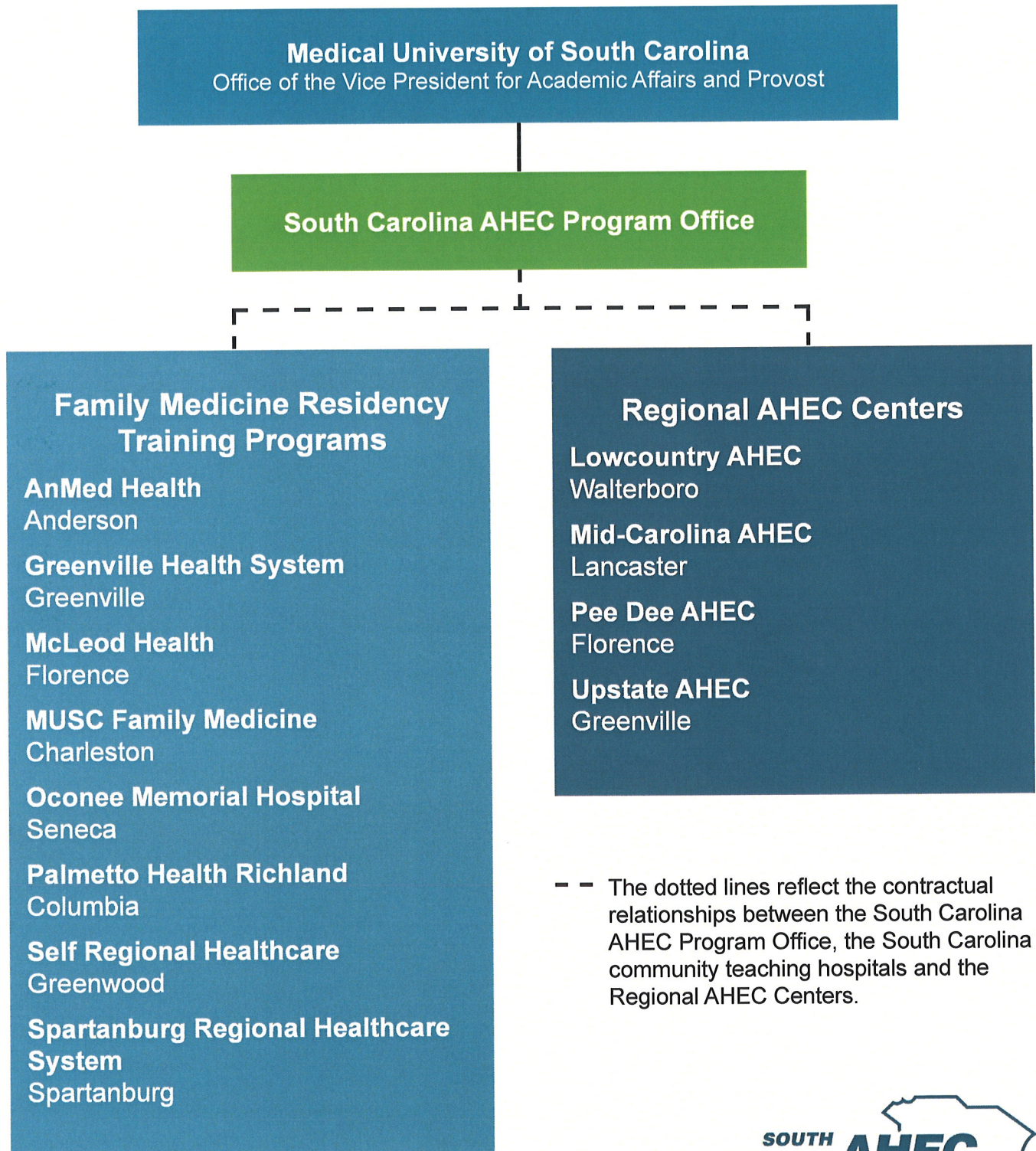
Linda M. Lacey

*Director of the Office for Healthcare
Workforce Analysis & Planning*
843-792-1655
laceyl@musc.edu
www.officeforhealthcareworkforce.org

**South Carolina AHEC
Medical University of South Carolina
19 Hagood Avenue, Suite 802
MSC 814
Charleston, SC 29425-8140
Fax: 843-792-4430**

www.scahec.net

Organizational Chart



- The dotted lines reflect the contractual relationships between the South Carolina AHEC Program Office, the South Carolina community teaching hospitals and the Regional AHEC Centers.

South Carolina AHEC Major Program Areas

AHEC System

1

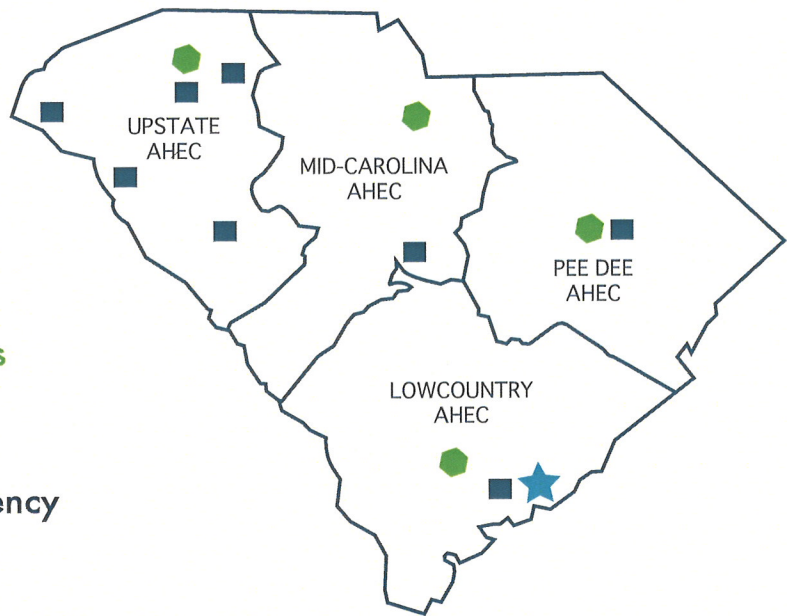
Program Office

4

Regional AHEC Centers

8

Family Medicine Residency Training Programs



Workforce Development & Support

Office for Healthcare Workforce Analysis & Planning

Health Careers Programs

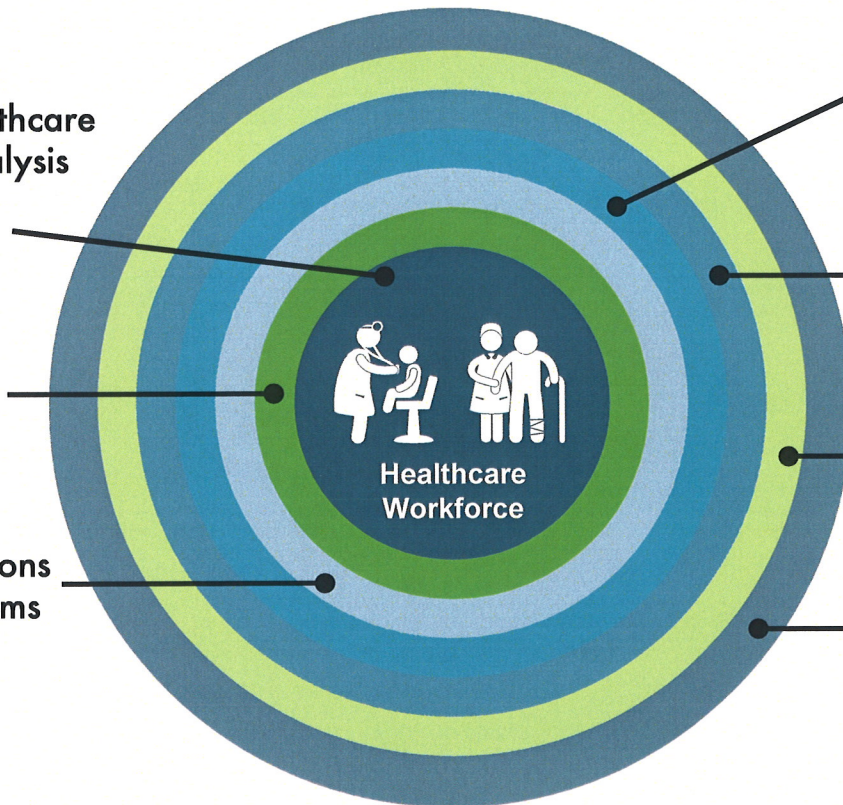
Health Professions Student Programs

Graduate Medical Education

Rural Recruitment & Retention

Professional Education

Telehealth





Summary of Accountability Report

The South Carolina Area Health Education Consortium is a separate state agency and a component unit of the Medical University of South Carolina (MUSC). Although the AHEC budget is separate from the MUSC budget, all administrative and financial activities are conducted within the MUSC system. Consequently, the Accountability Report from MUSC includes information about the South Carolina AHEC.

Funding

Building and Supporting the Healthcare Workforce South Carolina Needs

Comparison of Total Funds Appropriation/Authorization to Actual Expenditures

		<u>FY 12-13</u>	<u>FY 13-14</u>	<u>FY 14-15</u>	<u>FY 15-16</u>
Recurring General Funds	Appropriation Expenditures	\$9,485,149 \$9,485,149	\$9,622,989 \$9,622,989	\$9,752,642 \$9,752,642	\$9,772,208
Non-Recurring General Funds	Appropriation Expenditures	\$0 \$0	\$0 \$0	\$200,000 \$0*	\$200,000 \$200,000
Federal Funds	Authorization Expenditures	\$845,016 \$362,874	\$845,016 \$458,658	\$844,700 \$470,642	\$844,700
Other Funds	Authorization Expenditures	\$2,093,667 \$589,637	\$2,093,668 \$525,946	\$2,808,927 \$1,649,831	\$2,808,927
Total Funds	Appropriation/ Authorization Expenditures	\$12,423,832 \$10,437,660	\$12,561,673 \$10,607,593	\$13,606,269 \$11,873,115	\$13,625,835 \$200,000

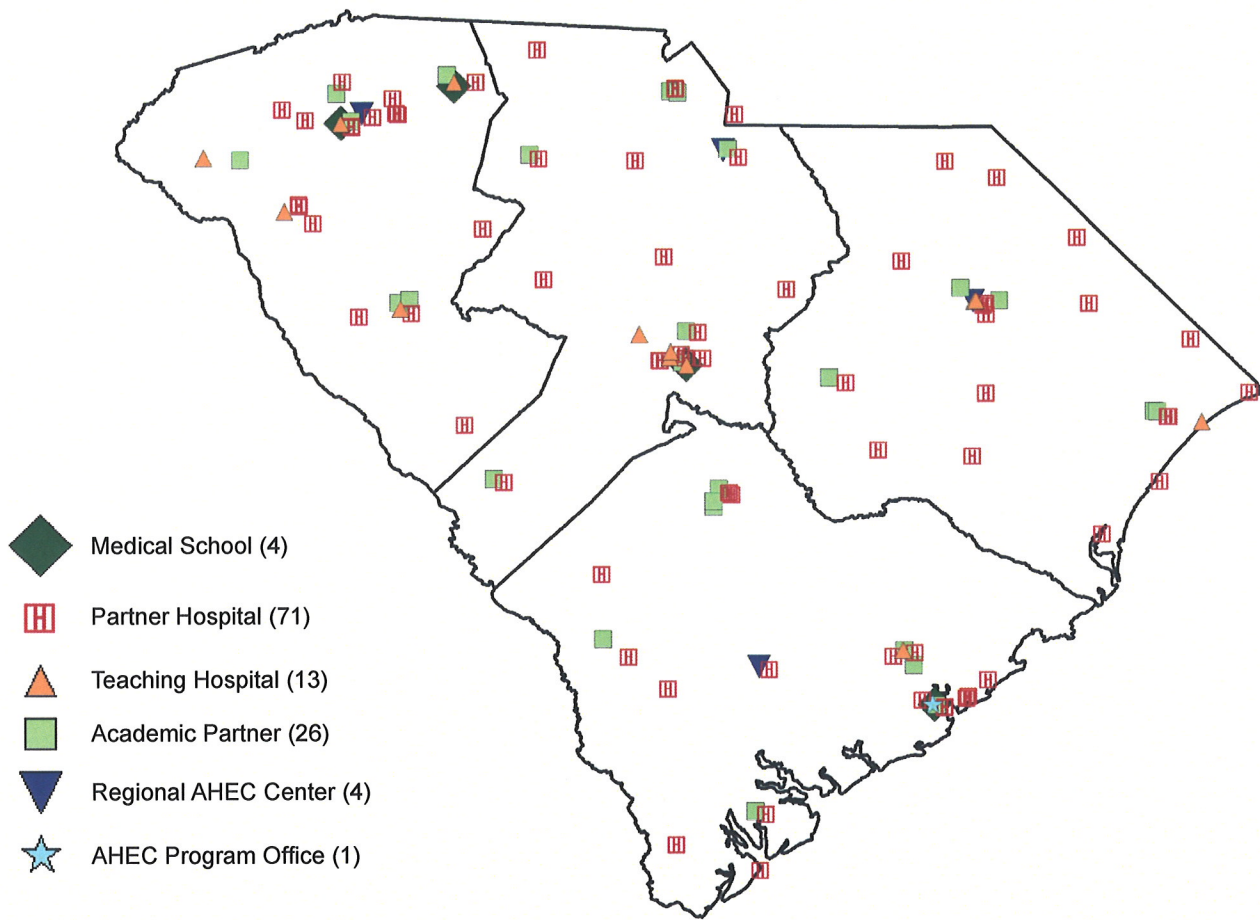
*Carried forward and expended in FY16



Member Institutions

- **AnMed Health**
Anderson
- **Edward Via College of Osteopathic Medicine**
Spartanburg
- **Greenville Health System**
Greenville
- **Lowcountry AHEC**
Walterboro
- **McLeod Health/Pee Dee AHEC**
Florence
- **Medical University of South Carolina**
Charleston
- **Mid-Carolina AHEC**
Lancaster
- **Palmetto Health Richland**
Columbia
- **Rural Physician Board**
Columbia
- **Self Regional Healthcare**
Greenwood
- **Spartanburg Regional Healthcare System**
Spartanburg
- **University of South Carolina School of Medicine**
Columbia
- **University of South Carolina School of Medicine - Greenville**
Greenville
- **Upstate AHEC**
Greenville

Statewide Partnerships



State Agency Partners

- SC Department of Health & Human Services
- SC Department of Health & Environmental Control & Public Health Departments
- SC Department of Education
- Health & Demographics Section, SC Revenue & Fiscal Affairs Office

Association Partners

- SC Dental Association
- SC Hospital Association
- SC Medical Association
- SC Office of Rural Health
- SC Primary Health Care Association

Provider Partners

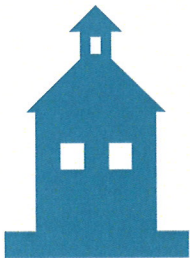
- Community Health Centers
- Rural Health Clinics
- Primary Care Practices
- Community Practitioners
- Community Preceptors

These are just a few examples of South Carolina AHEC's continually growing partnership network that builds and supports the healthcare workforce statewide.

Key Result Areas

Building and Supporting the Healthcare Workforce South Carolina Needs

Health Careers Programs



9,294 hours of health professions observation time

Provided to 764 Health Careers Program high school participants as part of a structured academic curriculum and services to prepare students for the rigors of health professions programs

749 participant contact hours

Achieved by participants in the Bench to Bedside pipeline program for undergraduate students funded by The Duke Endowment – expanded to include an elective course for academic credit at Winthrop and Coastal Carolina Universities

Health Professions Student Programs



4,143 student weeks of clinical rotations

Facilitated by the AHEC Health Professions Student Coordinators for students in rural and underserved communities

118,344 patient contacts

Resulted from clinical rotations provided by a preceptor network of more than 450 practitioners

970 clinical placements

Facilitated by the AHEC Health Professions Student Coordinators for health professions students

278 clinical training sites

Hosted AHEC-placed health professions students for clinical experiences

Key Result Areas

Building and Supporting the Healthcare Workforce South Carolina Needs

Professional Education



7,469 certificates

Last year issued through AHEC U, an online learning management system, for professional education

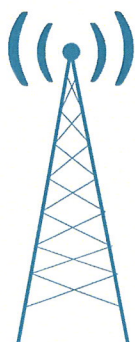
743 participant hours of educational programs

Broadcast statewide through the South Carolina Health Occupations Outreach Learning System (SCHOOLS) videoconferencing network, expanding professional educational opportunities for healthcare professionals in all counties

38,309 participants

Took advantage of AHEC-sponsored programs last year to enhance their clinical skills and maintain their licenses/certifications

Telehealth



40 hospitals, EMS offices, universities & colleges

Comprise the SCHOOLS videoconferencing network for telehealth and tele-education

8 primary care practices

Linked with experts at the MUSC Weight Management Center for the Wellness Connect telehealth weight management program that enables rural patients to participate without leaving their communities

8 program areas

Delivered through innovative partnerships in the areas of pediatrics, emergency services, infectious disease, pharmacology, neurodevelopmental disorders, hypertension, geriatrics and team-based care

Key Result Areas

Building and Supporting the Healthcare Workforce South Carolina Needs

Office for Healthcare Workforce Analysis & Planning



Filling an information gap

South Carolina lacked a program analyzing the current healthcare workforce, estimating future needs, and tracking educational capacity

Established in 2009

As a program within the South Carolina AHEC System

Originally funded by The Duke Endowment

\$500,000 annually in funding to support the activities of 3 full-time staff members

Collecting and analyzing data

Working closely with the Health & Demographic Section of the South Carolina Revenue and Fiscal Affairs Office

Creating discipline-specific reports

Analyzing medicine, dentistry, pharmacy, nursing and allied health workforces and their educational pipelines

Publishing *The SC Health Professions Data Book*

Available online to provide county-level data for South Carolina

Responding to data requests

Providing unbiased information to decision makers when they need it

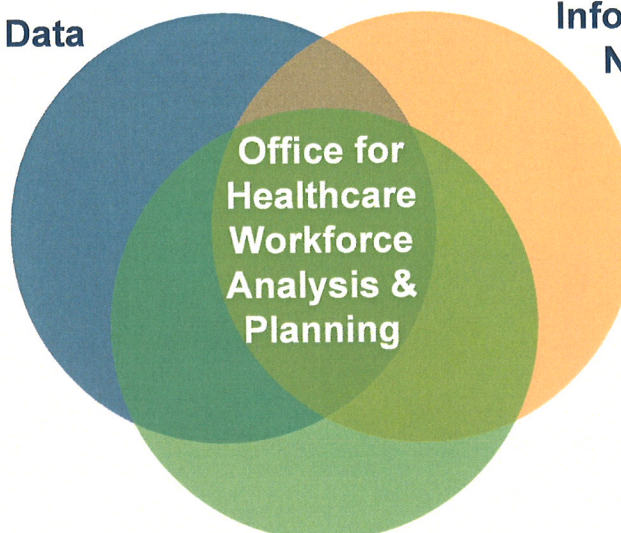
Received \$200,000 in non-recurring funds in FY15 & FY16

Additional recurring funds needed to sustain the Office



Raw Data

Information Needs



Informing Policy Decisions

Converting data into relevant, unbiased information available to decision makers when they need it.

Data Collection

Gathering original data and using existing data resources to answer questions about South Carolina's healthcare workforce

Data Analysis

Applying appropriate analytic techniques to produce accurate results including supply and demand projections, tracking and monitoring workforce trends and mapping resources

Report Writing

Producing in-depth profiles (e.g. *The South Carolina Health Professions Data Book*), short summary fact sheets, policy briefs

Information Distribution

Distribution of analyses through direct mailing of reports to policy makers, free downloads on our website, press releases and Twitter announcements

Informing Policy

Working with policy makers to develop needed health workforce resources and providing unbiased information to support decision making

Partners

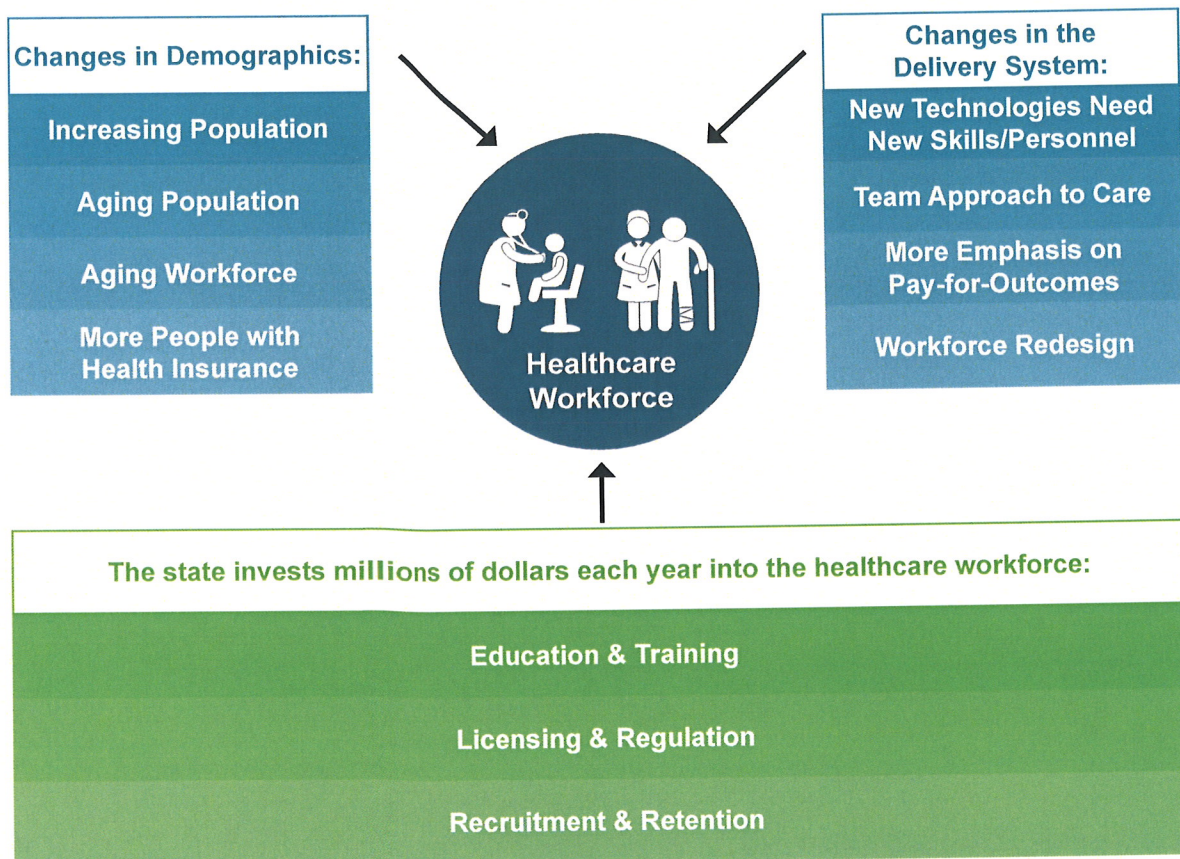
- Health and Demographics Section, SC Revenue and Fiscal Affairs Office
- Office for Health Workforce Research for Nursing

Stakeholders

- Legislators
- State Agencies
- Licensing Boards
- Educational Institutions
- Graduate Medical Education Programs
- Health Systems
- Professional Associations
- Grant Writers
- Students / Potential Health Professionals
- Economic Development Planners
- South Carolina Citizens

The Need for The Office of Healthcare Workforce Analysis & Planning

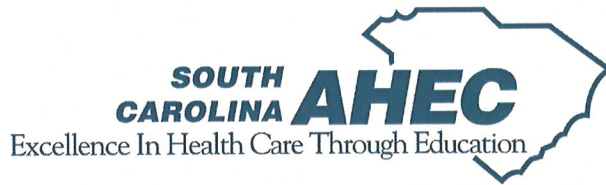
Current events are affecting both the supply and demand for healthcare professionals in new ways



Our state needs a unit *dedicated* to:

- **Assessing the impact of a changing healthcare system on the demand for healthcare personnel**
- **Measuring and monitoring that workforce to anticipate shortages or surpluses**
- **Providing unbiased information to support strategic planning decisions**

Building and Supporting the Healthcare Workforce South Carolina Needs



Our FY 16-17 Budget Request

Provide and maintain level funding for the South Carolina AHEC and provide additional recurring funds to continue the valuable work of the Office for Healthcare Workforce Analysis & Planning (OHW).

\$450,000 in recurring funds for FY 16-17

- Research personnel
- Data acquisition
- Preparation & distribution of publications

The South Carolina AHEC has relied on remaining funds from The Duke Endowment and \$200,000 in non-recurring funds to sustain the Office for Healthcare Workforce Analysis & Planning in FY 15-16. Full funding of \$450,000 in recurring funds will be needed to sustain the OHW in FY 16-17 and beyond.

FTE Requests: There is no FTE request for the South Carolina AHEC.

Provisos: There are no provisos specific to the South Carolina AHEC. However, we support the codification of Proviso 23.1, establishing the Rural Dentist Program.